

Introduction

SOUTH DAKOTA FACTS

South Dakota, the Mount Rushmore state, is a modern day blend of Old West attractions and modern day industry and research. Our state's economy is driven by the traditional industries of agriculture, financial services and manufacturing, but gaining momentum are the professional and technical services industries, knowledge-based industries such as biotech and business processes.

The South Dakota of today is characterized by...

- Strong work ethic and high productivity workforce
- #1 business tax climate in America
- Accessibility to leaders to get the job done

Workforce

- Prepared: We annually have a steady supply of young workers eager for the opportunity to make a living in South Dakota. We're committed to equipping our youth with the skills they need for their future.
- Productive: #3 Most Productive Workforce

Business Climate

- #1 State Business Tax Climate (Tax Foundation)
- #1 Environment for Entrepreneurs (Small Business & Entrepreneurship Council)
- #1 Small City for Business: Sioux Falls; #11: Rapid City (Forbes)
- #8 Corporate Business Environment (Pollina Corporate Real Estate)
- #8 BHI Competitiveness Index (Beacon Hill Institute for Public Policy Research)

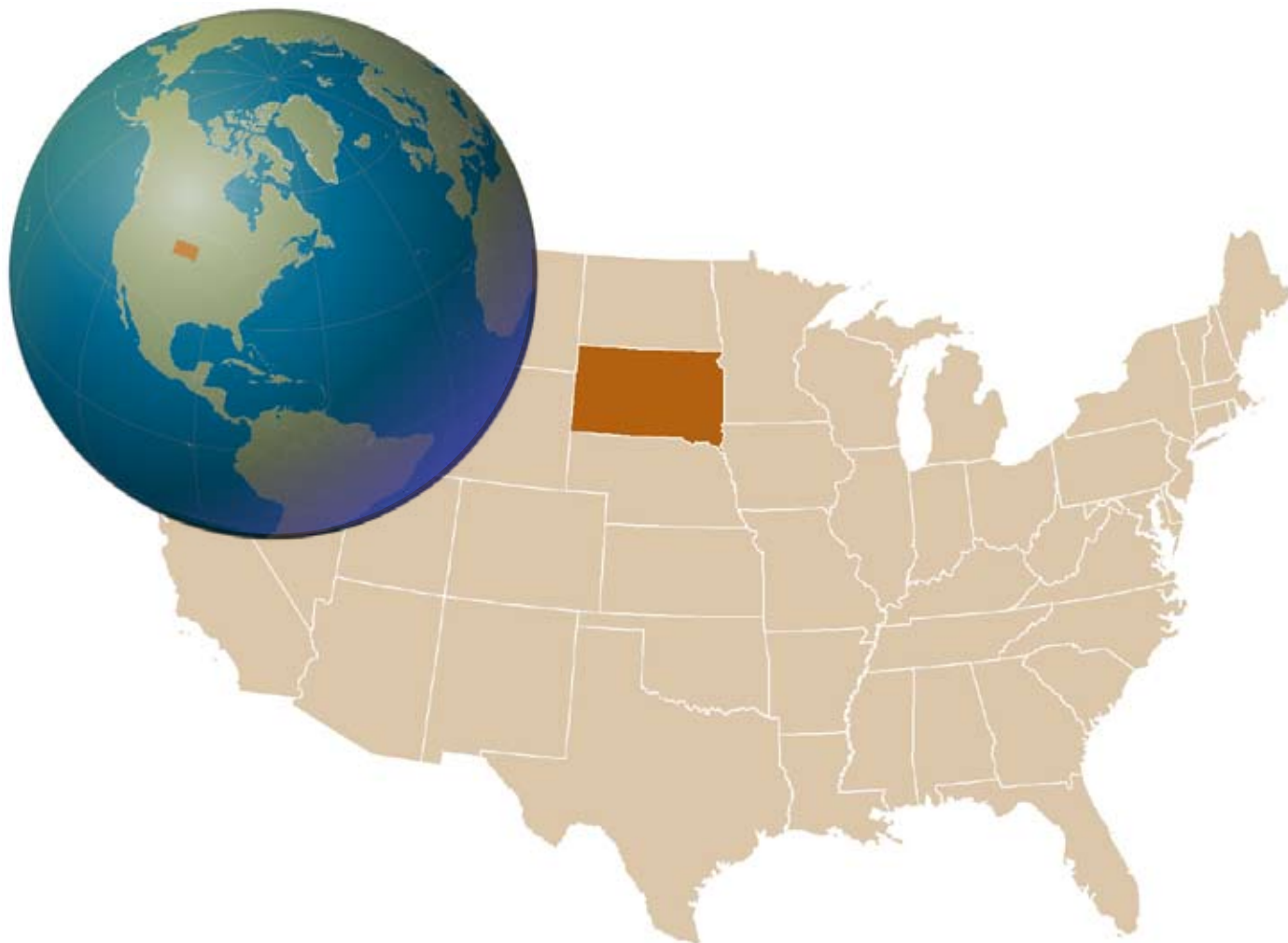
Accessibility

- Governor Dennis Daugaard is spearheading the state's efforts to become leaders in business, research and quality of life
- 100 percent of public schools (K-12 & higher ed) have high-speed broadband access
- Border to border Interstate Highways: I-29 and I-90



• **SOUTH DAKOTA QUICK FACTS**

Population (2010)	814,180
State Capital.....	Pierre
Largest City.....	Sioux Falls
Gross Domestic Product by State (2009)	
<i>(1.4% increase over 2008)</i>	\$38.3 billion
Per Capita Personal Income (2009)	
<i>(2.6% decrease from 2008)</i>	\$38,208
Unemployment Rate (2009)	4.5 percent
Average Commute Time (2009)	
<i>(2nd shortest commute in country)</i>	16.7 minutes
Land Area (2000).....	75,885 square miles
Return on Payroll (2008)	
<i>(based on GDP by State)</i>	3 rd Most Productive



Labor Force Demographics

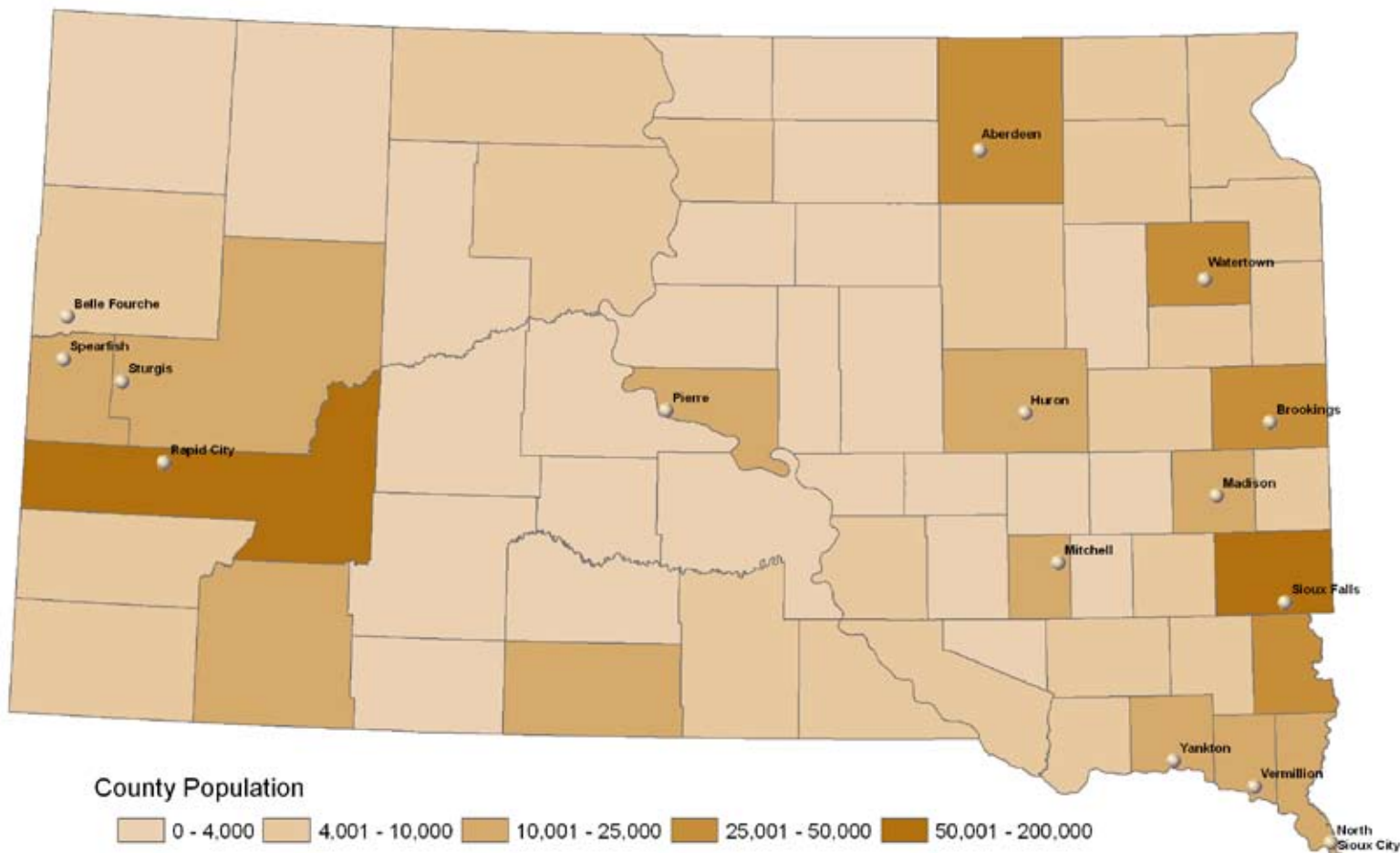
POPULATION

Population of Largest Cities & Counties (2009)

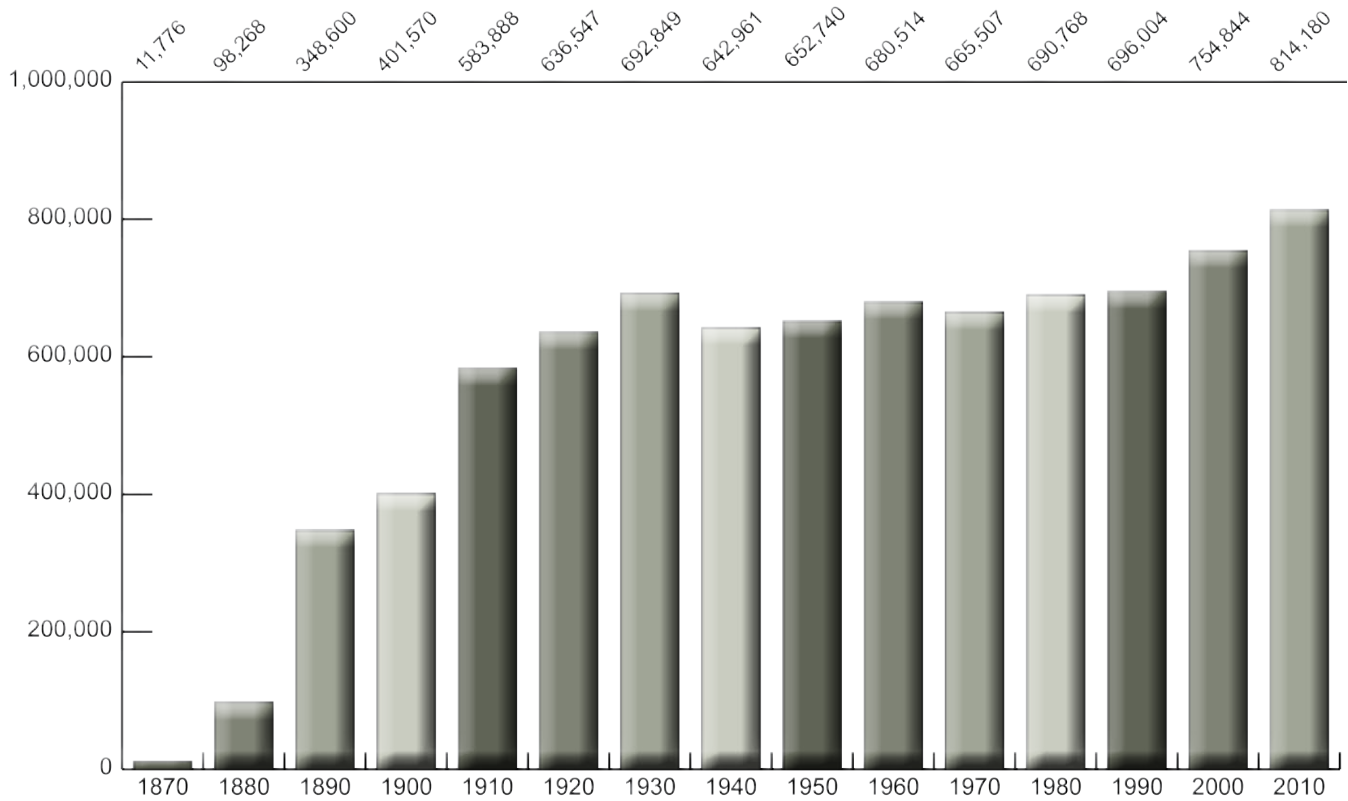
CITY	POPULATION	COUNTY	POPULATION
Sioux Falls (<i>Minnehaha Co.</i>)	157,935	Minnehaha	183,048
Rapid City (<i>Pennington Co.</i>)	67,107	Pennington	100,850
Aberdeen (<i>Brown Co.</i>)	24,992	Lincoln	41,218
Watertown (<i>Codington Co.</i>)	20,350	Brown	35,204
Brookings (<i>Brookings Co.</i>)	20,184	Brookings	30,056
Mitchell (<i>Davison Co.</i>)	14,747	Codington	26,168
Pierre (<i>Hughes Co.</i>)	14,072	Meade	23,916
Yankton (<i>Yankton Co.</i>)	13,798	Lawrence	23,498
Huron (<i>Beadle Co.</i>)	11,281	Yankton	21,986
Vermillion (<i>Clay Co.</i>)	10,417	Davison	18,931

Source: U.S. Census Bureau, 2009 Annual Estimates of the Resident Population for Incorporated Places and Counties, Population Division.

County Populations (2009)



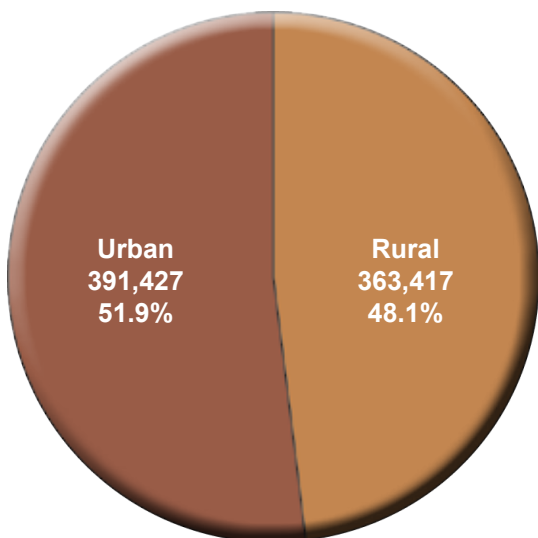
Historical State Population



Source: U.S. Census Bureau, January 2011.

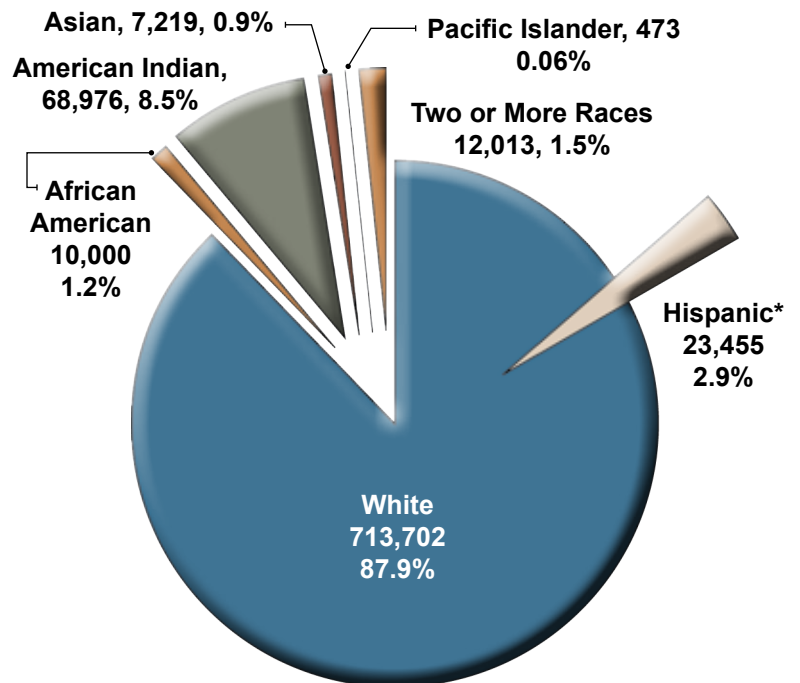
Population Distribution

URBAN & RURAL POPULATIONS (2000)



Source: U.S. Census Bureau, 2000 Census.

RACIAL DISTRIBUTION (2009)



*Hispanic population counts are provided in combination with other races but also separated to illustrate the total hispanic population.

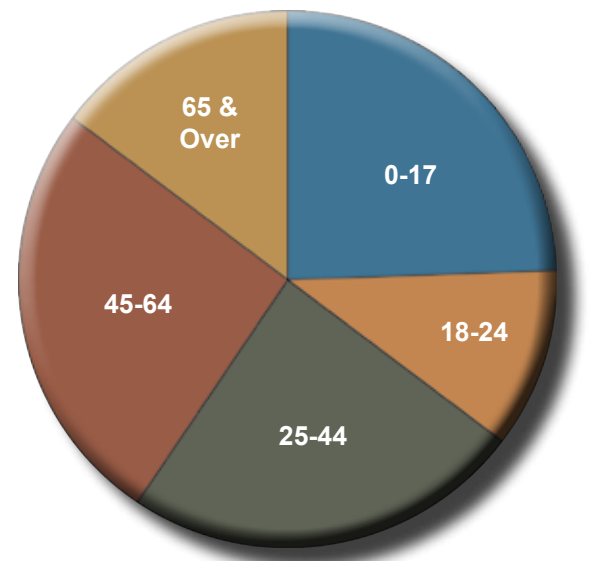
Source: State Population Estimates by Race Alone and Hispanic or Latino Origin. Population Division, U.S. Census Bureau, 2009.

Labor Force Demographics

AGE DISTRIBUTION (2009)

Age	Population	%
Total	812,383	100.0%
0-17	199,616	24.6%
18-24	87,586	10.8%
25-44	196,143	24.1%
45-64	211,306	26.0%
65 & over	117,732	14.5%

Source: U.S. Census Bureau, Estimates of the Resident Population by Selected Age Groups: July 1, 2009.



LABOR FORCE

Labor Force in South Dakota (2009-2010)

	LABOR FORCE	EMPLOYED	UNEMPLOYED	UNEMP. RATE	LABOR SUPPLY*
Dec '09	439,085	417,485	21,600	4.9%	85,525
Avg '09	446,350	425,080	21,270	4.8%	NA
Mar '10	440,030	416,635	23,395	5.3%	85,570
Jun '10	451,925	432,735	19,190	4.2%	83,040
Sep '10	442,610	425,080	17,530	4.0%	81,270

* The labor supply considers both the unemployed and the underemployed and is a more accurate representation of South Dakota's labor pool.

Source: S.D. Dept of Labor, Labor Market Information Center, Labor Force Statistics, Not Seasonally Adjusted, January 2011.

Labor Participation Rates (2000-2010)

YEAR	SOUTH DAKOTA	UNITED STATES
2010	70.7%	64.3%
2009	70.8%	64.7%
2008	73.0%	65.8%
2007	73.7%	66.0%
2006	72.5%	66.2%
2005	73.0%	66.0%
2004	70.7%	66.0%
2003	73.8%	66.2%
2002	73.4%	66.6%
2001	72.7%	66.8%
2000	72.7%	67.1%

Source: US Dept of Labor, Bureau of Labor Statistics, "Employment Statistics of the Civilian Noninstitutional Population by State," January 2011.

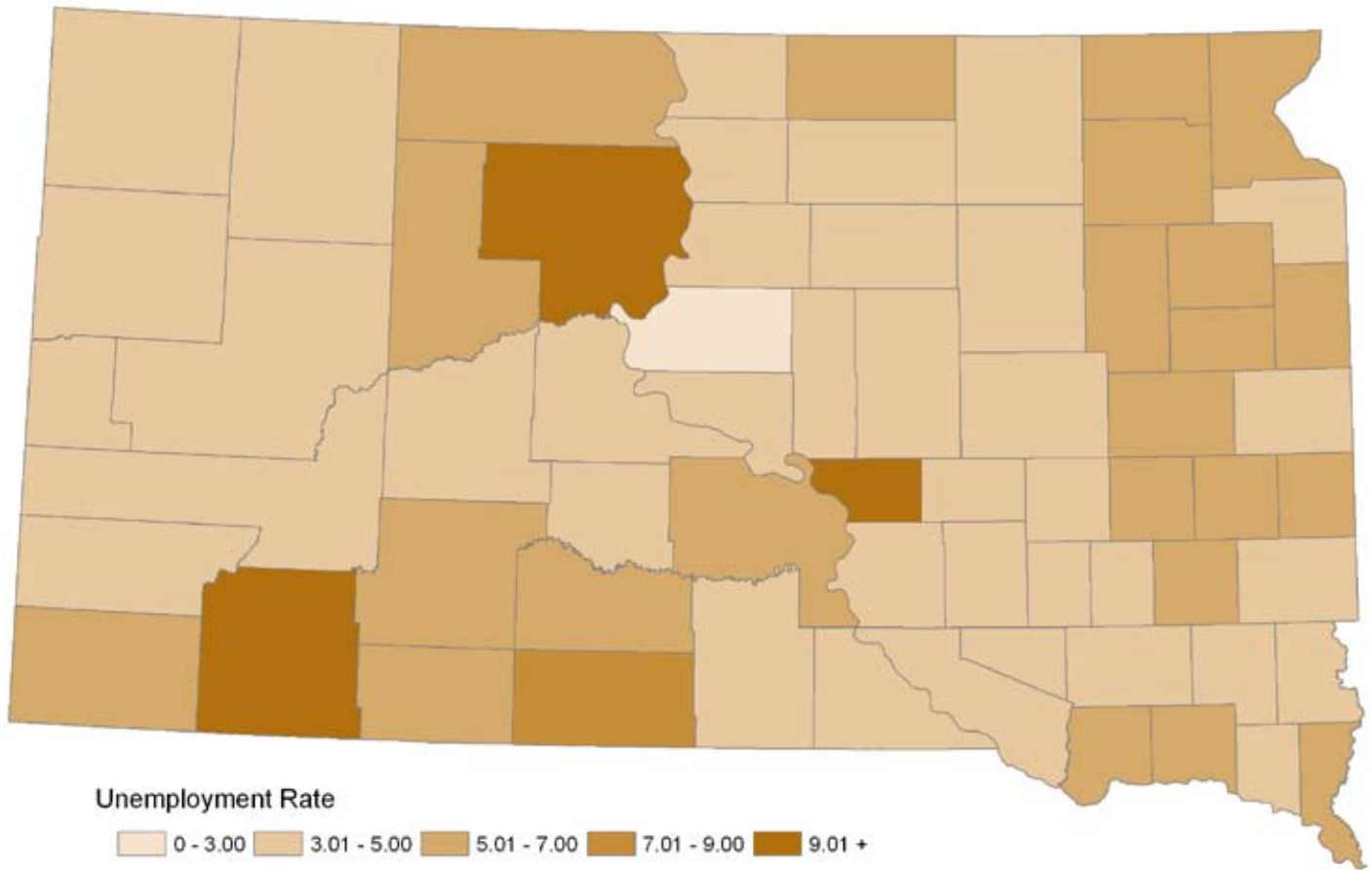
UNION MEMBERSHIP (2010)

South Dakota 5.6%
United States 11.9%

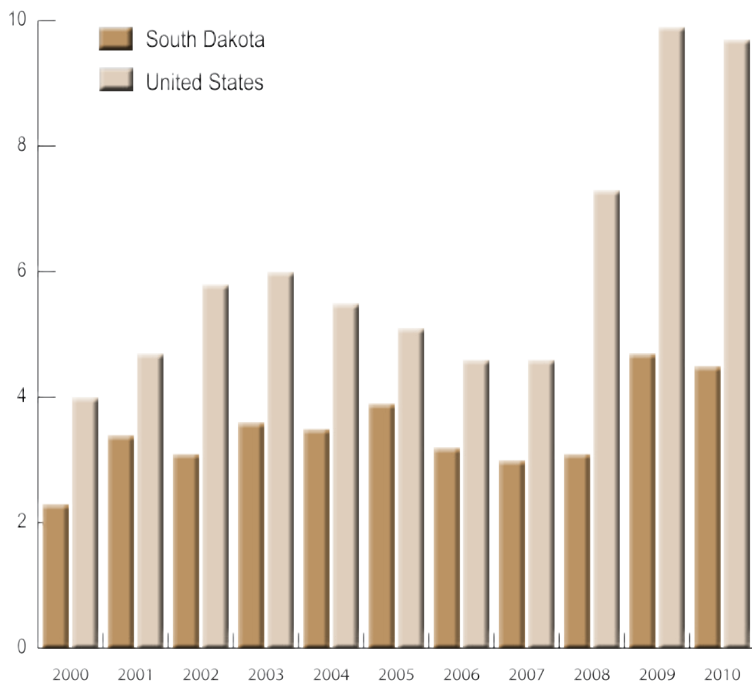
Source: U.S. Dept. of Labor, Bureau of Labor Statistics, Table 5: Union Affiliation of Employed Wage & Salary Workers by State, 2010.

*South Dakota is a
Right-to-Work
state*

County Unemployment Rates (2008)

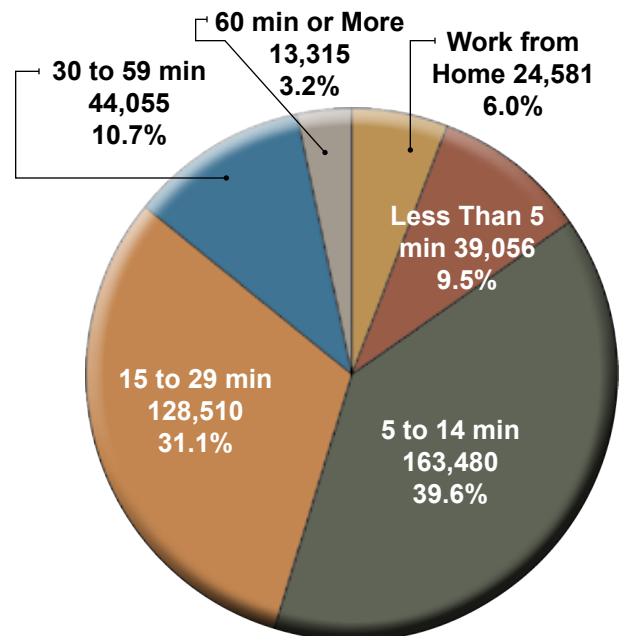


Annual Average Unemployment Rates (2000-2010)



Source: S.D. Dept. of Labor, Labor Market Information Center, Labor Force Statistics, January 2011.

Travel Time to Work (2009)



Source: U.S. Census Bureau, 2009 American Community Survey, Travel Time to Work, Means of Transportation to Work.